

# IOSH Working Safely Certificate

## The IOSH Working Safely Certificate

The Institution of Occupational Safety and Health (IOSH) Working Safely course is designed to improve the safety culture within an organisation. It trains workers to ensure that their actions contribute to safety and health in the workplace and that individual responsibilities are clearly understood. Ideally the course should be delivered as part of an induction programme, but it can also form part of ongoing training.

## The Institution of Occupational Safety and Health

The Institution of Occupational Safety and Health (IOSH) is the Chartered body for health and safety professionals. With more than 37,000 individual members, we're the biggest professional health and safety organisation in the world.

## Who should study for the IOSH Working Safely Certificate?

This course is aimed at all workers who have had no previous formal health and safety training.

## Entry Requirements

There are no entry requirements for the IOSH Working Safely Certificate course. Assessments are undertaken in English and Arabic.

## What you will Study

The course requires 8 hours of study and covers the following areas:

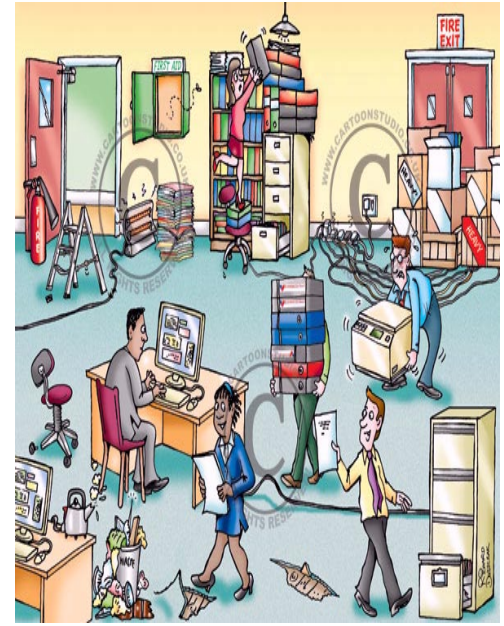
- Identifying hazards and risks in the workplace.
- Accidents and their causes.
- Legal rights and duties of employers and employees.
- Identifying and controlling common hazards such as fire, electricity, chemicals and work equipment.

## Assessment

The assessment is a 1-hour exam containing multiple-choice questions. Participants who successfully complete the assessment will be awarded the IOSH Working Safely Certificate by IOSH (The Institution of Occupational Safety and Health), United Kingdom.

## Progression

IOSH courses provide an excellent foundation for students who may wish to take their Safety and health studies further. The next step will be either the RRC Key2safety Level 2 Intermediate Award in Occupational Safety and Health or IOSH Managing Safely Certificate.



# IOSH Working Safely Certificate

<b>English</b>	<b>Block Release</b>	<b>Duration</b> 8 hrs / 1 day
		<b>Course dates</b> 16.01.2012 02.02.2012 19.03.2012 30.04.2012 28.05.2012 10.06.2012 09.06.2012 12.08.2012 17.09.2012 01.10.2012 20.11.2012 20.12.2012
		<b>Course Time</b> 07:30 – 3:30 hrs <b>Course Fees</b> BD 120
		<b>Duration</b> 8 hrs / 2 days
<b>Evening Session</b>	<b>Evening Session</b>	<b>Course dates</b> These Courses are organized in house or as requested
		<b>Course Time</b> 15:30 – 19:30 hrs <b>Course Fees</b> BD 120
		<b>Duration</b> 8 hrs / 2 days
		<b>Course dates</b> These Courses are organized in house or as requested

